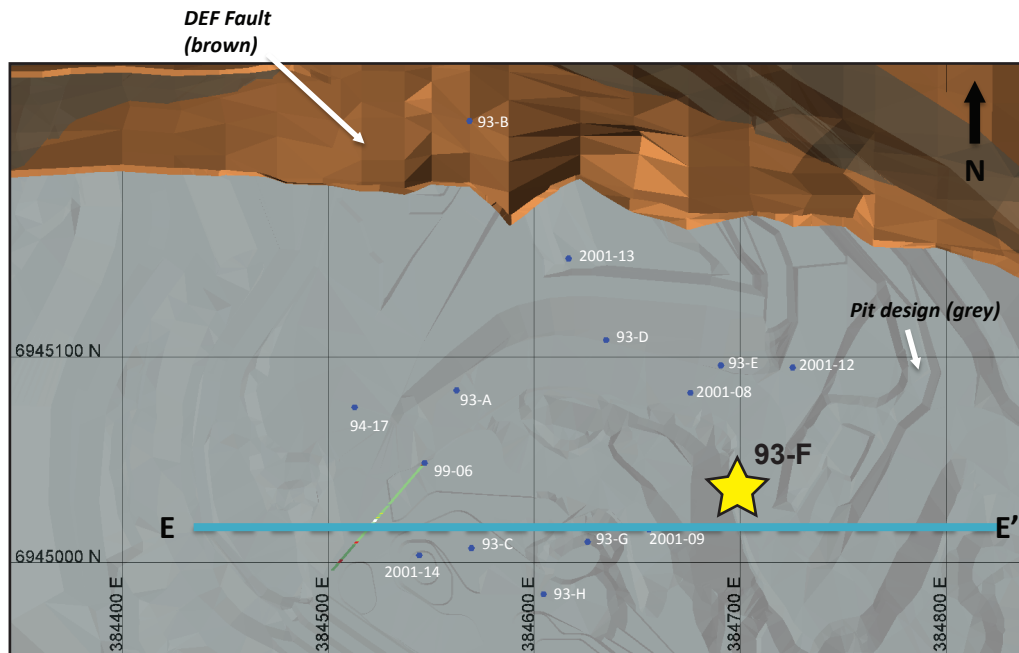


Minto deposit (Yukon MINFILE 115I 021, 022)

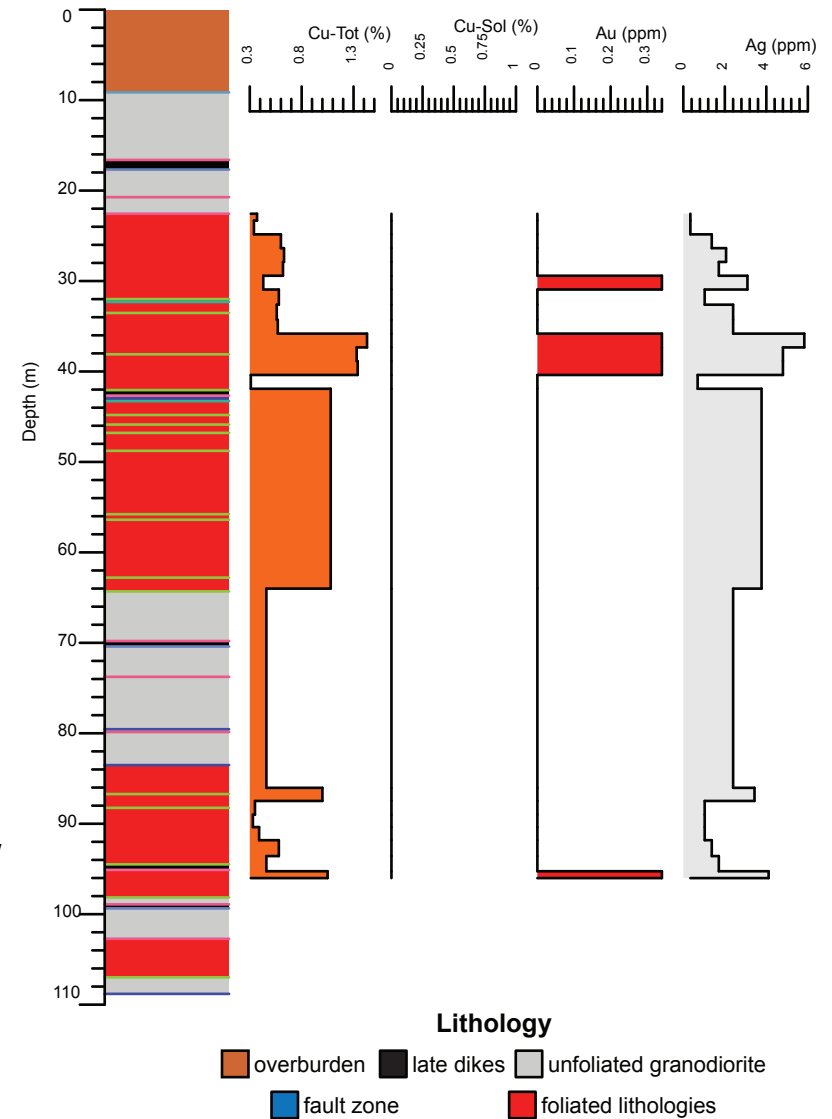
Drill Hole: 93-F, Minto Main deposit

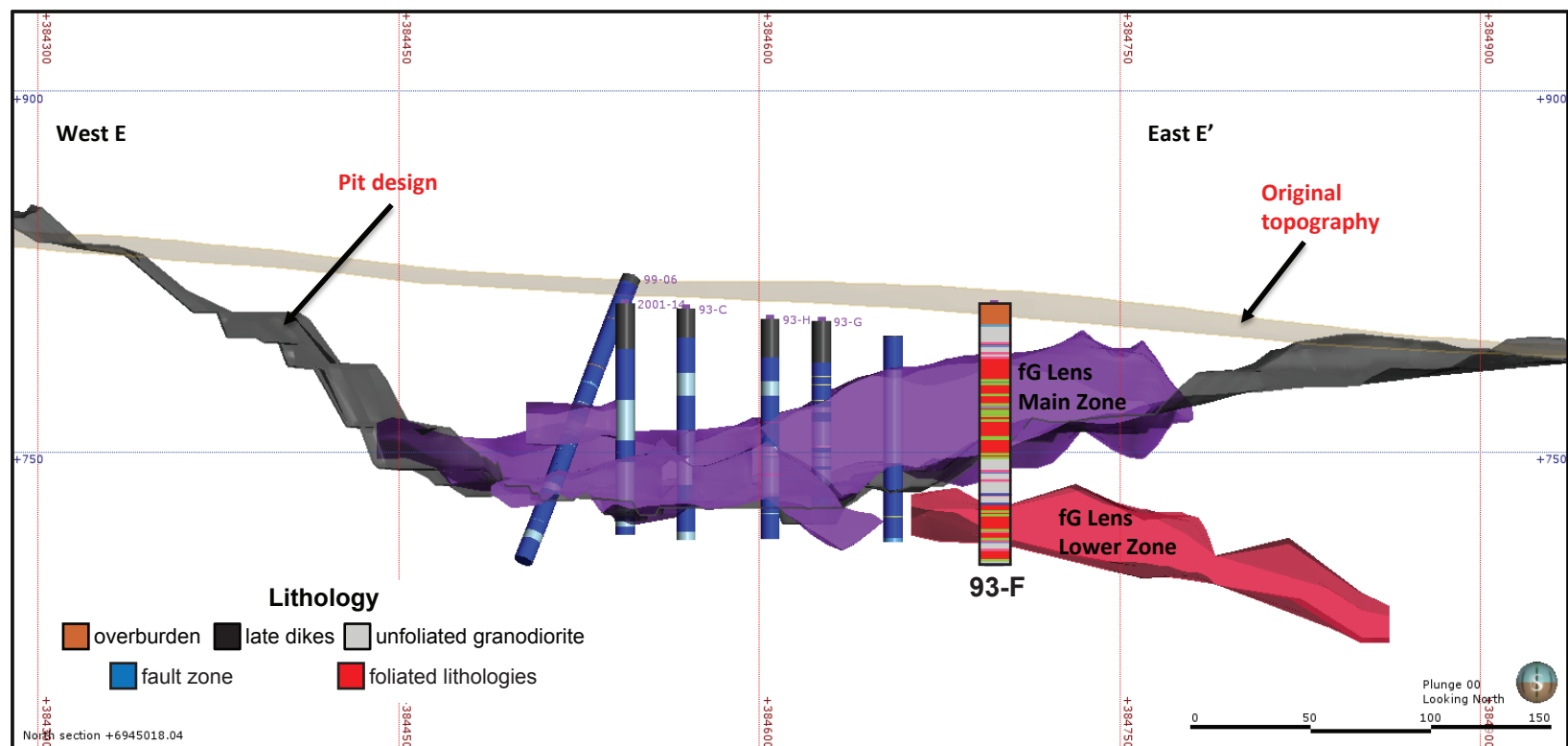
Area	Hole No.	Azimuth	Dip	Length (m)	Collar coordinates (NAD83, Zn 8)
Minto Main	93-F	0	-90	108.81	384697mE, 6945035mN



Above: Orthophoto of Minto area. Collar location of 93-F shown by yellow star, blue circles show collar locations of other drill holes in YGS collection.

Right: Simplified strip log with selected assays.





Above: Simplified vertical east-west cross-section through the Minto Main pit.

Right: Selected assays through Minto Main lower zone. Cu - Tot = sulphide and non-sulphide copper, Cu-Sol = non-sulphide copper

Hole	From (m)	To (m)	Interval (m)	Sample	Cu (%)	Cu-Sol (%)	Au (ppm)	Ag (ppm)
93-F	33.53	35.05	1.52	4586	0.6	0.0	0.0	2.4
93-F	35.05	36.58	1.53	4587	0.6	0.0	0.0	2.4
93-F	36.58	38.1	1.52	4588	1.4	0.0	0.3	5.8
93-F	38.1	39.62	1.52	4589	1.3	0.0	0.3	4.8
93-F	39.62	41.15	1.53	4590	1.3	0.0	0.3	4.8
93-F	41.15	42.67	1.52	4591	0.3	0.0	0.0	0.7
93-F	42.67	44.81	2.14	4592	1.1	0.0	0.0	3.8
93-F	85.34	86.72	1.38	4991	0.5	0.0	0.0	2.4
93-F	86.72	88.24	1.52	4992	1.0	0.0	0.0	3.4
93-F	88.24	89.76	1.52	4993	0.4	0.0	0.0	1.0